



# GOVT.PATALESHWAR COLLEGE MASTURI

## ENERGY AUDIT REPORET



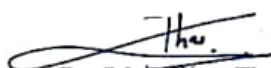
**SESSION 2018-19**


**NAAC ACCREDITATED GRADE "B"**


**AFFILIATED TO ATAL BIHARI UNIVERSITY, BILASPUR (C.G)**

## Energy Audit Certificate

This is to certify that an "Energy Audit" for government Pataleshwar College, Masturi Distt. - Bilaspur (C. G.) has been conducted for session 2018-19 to assess energy cost, availability and reliability of supply of energy conservation technologies and reduce energy consumption.

  
Dr. (Mrs.) Kiran Thakur  
Member  
Energy Audit Committee  
&  
HOD Department of Chemistry  
Government Pataleshwar College  
Masturi, Bilaspur (C. G.)

  
Dr. S. K. Gupta  
External Member  
Energy Audit Committee  
& Professor, Department of Physics  
Government E.R.R. Science P. G. College  
Bilaspur (C. G.)

  
Dr. D. R. Sahu  
Convener  
Energy Audit Committee  
&  
HOD Department of Mathematics  
Government Pataleshwar College  
Masturi, Bilaspur (C. G.)

## **Preface**

An energy audit is a systematic review of the energy consuming installations in a building or premises to ensure that energy is being used sensibly and efficiently. An energy audit determines the amount of energy consumption affiliated with a building and the potential savings associated with that energy consumption. Additionally, an energy audit is designed to understand the specific conditions that are impacting the performance and comfort in the available facility to maximize the overall impact of energy-focused building improvements. Data collection for energy audit of the Govt. Pataleshwar College, Masturi, Bilaspur (C. G.) campus was conceded by team for the period of June 2018 to May 2019. This audit was over sighted to inquire about convenience to progress the energy competence of the campus. This audit required to recognize the mainly energy proficient appliances. Besides several each day processes concerning common appliances have been enprovided which facilitate sinking the energy expenditure. Through implementation of the suggested improvement measures, the college can get the immediate benefit for paying less for energy bills. On the other hand, lowering of energy consumption in buildings will lead to the chain effect that less fossil fuel will be burnt for electricity generation by the power supply companies and relatively less pollutants and greenhouse gases will be introduced into the atmosphere, thus contributing to conserve the environment and to enhance sustainable development.

## **Acknowledgement**

The energy audit committee, Govt.Pataleshwar College Masturi, Bilaspur (C. G.) is very much thankful to Principal **Dr. (Mrs.) S. M. Tripathi** and IQAC coordinator Dr. (Mrs.) Rajesh Chaturvedi for entrusting and offering the opportunity of energy performance assessment assignment. Committee is also thankful to **Jitesh Divya, Assistant Engineer, CSPDCL, Masturi, Bilaspur (C. G.)** for guidance and support. At last we express our sincere thanks to all concerned staff interacted during the conduct of this exercise for completing official documentations.

# **Energy Audit Report of Government Pataleshwar College Masturi , Bilaspur (C. G.)**

## **Introduction**

Government Pataleshwar College is situated at Kosamdih Road, Masturi in Bilaspur District Chhattisgarh state. This college is affiliated with Atal Bihari Vajpayee University, Bilaspur (C. G.). This college is established in 1988 which has been imparting higher education at UG level in science, Commerce & Art faculty and PG level at arts. The College campus consists of buildings named as Old Building and Administrative Building in which administrative office, Library, exam control room, staff rooms, classrooms, various laboratory like Physics, chemistry, botany, zoology as well as computer laboratories, faculty departments are functioning. This college also provides gym facility to student undergoing through various type of physical activity.

## **Objective of Audit**

This is a challenge for every organization to ensure that energy growth in premises and buildings does not become unmanageable, but also gives and presents an opportunity to influence and identifies energy management issues. As the natural resources are limited and energy uses are increasing very sharply so it is very necessary to save natural resources by reducing energy consumption which can be achieved by using energy efficient equipment's and also by awareness of people about energy conservation. The overall objective of the assignment is to quantify energy saving in existing system and achieve reduction in energy consumption pattern. Hence the detail objectives are as under,

- To carry out the energy consumption
- To evaluate the performance of the equipment
- To find out the energy saving opportunities
- To quantify the total energy savings
- To find out the ways to achieve energy efficiency

## **Methodology:**

Data collection for energy audit of the Govt. Pataleshwar College, Masturi, Bilaspur (C. G.) campus was conceded by team for the period of June 2018 to May 2019. The audit involves visiting physical position of load & carry out inventory of various electrical load. Energy bill received from CSDCL is audited & studied for KWH requirement & how efficiently energy is used. Various positions are interacted, familiarized with energy audit & involved for successful & result oriented energy audit. Energy conservation & saving opportunities are identified during round & measurement for implementation.



											01		
Commerce Dept.	01		02	01									
Class Room 10	01		02										
Class Room 11	02		02										
Class Room 12	01		02										
Political Science Department	04		02	01									
Hindi Department	01		02	01									
Class Room 13	02		02										
Geography Dept.	01		02	01			01	01	01				
Class Room 14	02		03										
Class Room 15	01		02										
Class Room 16	02		02										
Sports department	08		06	01									
<b>Total</b>	<b>87</b>	<b>04</b>	<b>96</b>	<b>29</b>	<b>01</b>	<b>03</b>	<b>21</b>	<b>07</b>	<b>05</b>	<b>01</b>	<b>01</b>	<b>02</b>	<b>06</b>

**(ii) CSPDCL bills and payment analysis and working out average cost of power**

In order to calculate the electrical consumption in various parts of the college campus, electricity consumption and payment recorded in the meter of the college in CSPDCL portal was studied and verified with the bills and vouchers. Since the average unit is considered in monthly bill by taking readings on quarterly basis by the CSPDCL, the annual consumption for the session 2016-17 was used for comparative analysis

**Table 2: Power consumption (in units) in Session 2018-19  
(1 Unit= 1 kW-Hr)**

<b>S. No</b>	<b>Month</b>	<b>Consumption Unit (kW-Hr) Old Building</b>	<b>Consumption Unit (kW-Hr) Rusa Building</b>
1	Jun -18	1304	260
2	Jul -18	393	582
3	Aug -18	393	582
4	Sep -18	000	000
5	Oct-18	1149	1044
6	Nov-18	1351	200
7	Dec-18	550	229
8	Jan-19	616	193
9	Feb -19	456	409
10	Mar -19	1092	440
11	Apr -19	1092	527
12	May -19	1092	527
<b>Total Unit</b>		<b>9488</b>	<b>4993</b>
<b>Monthly Average Power Consumption</b>		<b>kW-Hr = 1327.83</b>	<b>416.08</b>



## Graphically Representation of Electricity Distribution:-

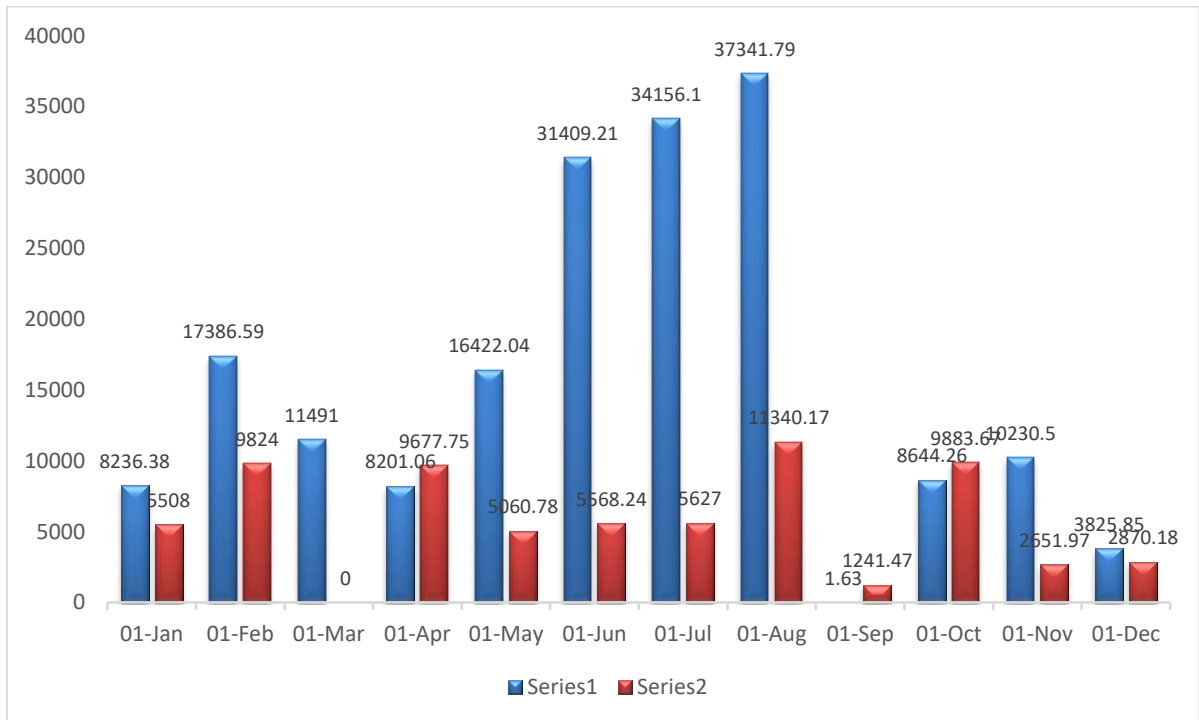
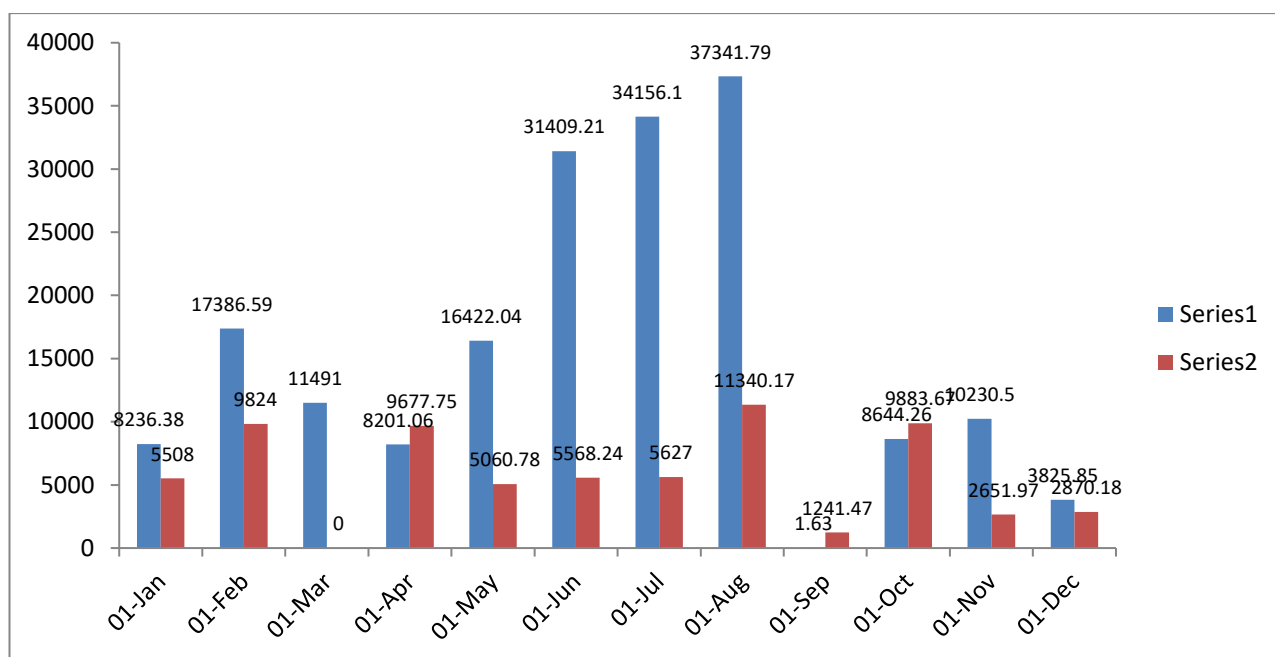


Table 3. Bill served by CSPDCL and paid by the college (Amount in Rs.)

S. No	Month	Consumption Unit (kW-Hr) Total Amount	Consumption Unit (kW-Hr) Total Amount
1	Jun -18	31409.21	5568.24
2	Jul -18	34156.10	5627
3	Aug -18	37341.79	11340.17
4	Sep -18	1.63	1241.47
5	Oct-18	8644.26	9883.67
6	Nov-18	10230.50	2651.97
7	Dec-18	3825.85	2870.18
8	Jan-19	8236.38	5508
9	Feb -19	17386.59	9824
10	Mar -19	11491	000
11	Apr -19	8201.06	9677.75
12	May -19	16422.04	5060.78

<b>Total (in Rs.)</b>	<b>170924.4</b>	<b>69253.23</b>
<b>Average Monthly Expenditure on Electricity Bill</b>	<b>14243.7</b>	<b>5771.10</b>

**Graphically Representation. Bill served by CSPDCL and paid by the college (Amount in Rs.)**




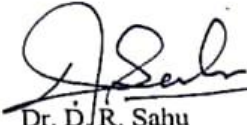
**(ii) Observations and Recommendations:**


The energy consuming system and load are studied for identifying energy saving and conservation opportunity. data generated in energy audit are useful for to understand the energy distribution and utilization of college. During movement for study the various element in campus in scope of Energy Audit, many improvement potential areas & energy saving opportunities are observed. These are highlighted below with recommendation for action plan & its implementation for enhancing energy efficiency & cost saving:

1. There is vital scope for energy conservation in lighting & fan system as below. The financial analysis with cost effectiveness study of various options is already given. A) Replacement of conventional fan regulator with electronic regulator. B) Replacement of CFL tube light with LED bulb. C) Replacement of incandescent bulb with CFL. D. Replacement of CRT monitor with LED or LCD monitor.
2. It was found during campus electrical load inventory round many classrooms without occupancy. However Tube light & ceiling fan loads were on wasting costly electrical

- energy as well as adding unwanted cost to college. It is proposed herewith to stick Awareness cum Warning Sticker to each switch board to take care of this negligence.
3. It is strongly recommended to introduce solar power for electricity generation in the campus. There is lot of useful roof top available in campus for installation of solar panel. This will help to generate green power mitigating greenhouse gas emission for protection of environment as well as energy conservation. This mode of power generation will save energy cost for purchasing power from CSPDCL and overcome dependency on utility power supply. This will also prove demonstrative model for studying student to imbibe technical knowledge.
  4. As there is huge surface area for collection of rain water on roof top, the rain water can be collected in storage tank installed at sufficient height to cater for need of various toilet block water during rainy season. This will help to achieve rain water harvesting as well as saving in electricity cost required for pumping water.
  5. Electrical wiring has become quite out dated in many places and joints are used. Hence these should be repaired for better energy management.
  6. Provision of separate transformer for college is good step to maintain supply reliability.
  7. There is still tremendous scope to create awareness among user about efficient & optimum use of energy & water to save. Instruction cum Request Sign board shall be displayed near each switch-board, toilet block & bathrooms to influence & guide to user to arrest misuse & wastage of power & water

  
Dr. (Mrs.) Kiran Thakur  
Member Energy Audit Committee  
& HOD Department of Chemistry  
Govt. Pataleshwar College, Masturi,  
Bilaspur (C.G)

  
Dr. D.R. Sahu  
Convener  
Energy Audit Committee  
& HOD Department of Mathematics  
Govt. Pataleshwar College, Masturi,  
Bilaspur (C.G)

  
Dr. S.K. Gupta  
External Member  
Energy Audit Committee  
& Professor, Department of Physics  
Government E.R.R. Science P. G. College  
Bilaspur (C. G.)

